

HIGH SPIN HYGIENIC BARRIER WASHER EXTRACTORS

MB
RANGE

MB 70	MB 90	MB 110	MB 140	MB 180
70KG 154LB	90KG 198LB	110KG 242LB	140KG 308LB	180KG 396LB



FEATURES

- Freestanding, high spin
- Stainless steel cabinet (AISI 304)
- Stainless steel drum and tub
- Graphitronic® - new graphic display with almost unlimited possibilities as:
 - Communication interface enabling remote service
 - Multilingual microprocessor
 - Freely programmable
- Oversized frame, bearings and drum
- Large door opening (765x340 mm) for easy loading and unloading.
- Large drain valve (Ø 126 mm)
- Easy access to all parts
- Frequency controlled motor
- PowerWash® perforated chamber walls: more mechanical action, lower water consumption
- Standard Y-pocket (3 pockets) drum on MB110, 140, 180
- Standard Pullmann (2 pockets) drum on MB70, 90
- SuperEco washing programmes - significantly reduces water and electricity consumption
- Patented soap dispenser with 5 removable compartments (MB180 - 10 compartments)
- Air-operated water inlets

OPTIONS

- Liquid soap pumps
- Drum with 2 pockets on MB110, 140, with 3 pockets on MB70, 90
- Trace-Tech® traceability software and networking system
- Tap to take water samples
- Light and sound signalization of end of washer cycle
- Opti-load® linen weighing and waterconsumption optimization system
- Second display
- Self lubrication of bearing's oil seal
- Second drain valve for water recycling (Ø76mm)
- Second drain valve (Ø126 mm)



HYGIENIC SOLUTION



LARGE DOOR OPENING



EASY OPERATION

OPTILOAD

TRACE-TECH

POWERWASH

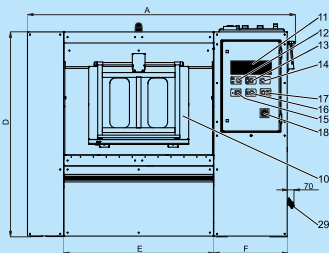
Graphitronic®

supereco
washing programmes

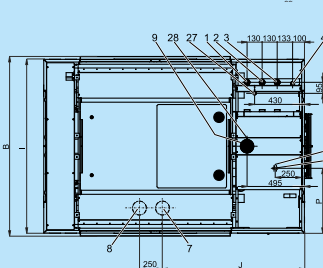
GET AHEAD IN LAUNDRY

TYPE		MB70	MB90	MB110	MB140	MB180
CAPACITY						
Drum volume	l	700	900	1100	1400	1800
Capacity 1:10	kg/lb	70/154	90/198	110/242	140/308	180/396
Drum diameter	mm	Ø 1000	Ø 1000	Ø 1100	Ø 1200	Ø 1300
POCKETS						
		Standard 2 Optional 3	Standard 2 Optional 3	Standard 3 Optional 2	Standard 3 Optional 2	Standard -
MOTOR						
Frequency controlled		standard	standard	standard	standard	standard
DRUM SPEED						
Wash speed	rpm	36	36	35	33	36
Spin speed	rpm	800	800	754	720	695
G-Factor		360	360	350	350	350
PROGRAMMER						
Graphitronic® microprocessor		standard	standard	standard	standard	standard
CABINET						
Stainless steel AISI 304		standard	standard	standard	standard	standard
DRUM						
Stainless steel AISI 304		standard	standard	standard	standard	standard
HEATING						
Electrical heating	kW	54	54	72	72	-
Steam heating	bar	6-8	6-8	6-8	6-8	6-8
CONNECTION						
Electrical		3x380-480V 50/60Hz 3x200-240V 50/60Hz				
Water inlet	inch	3x1,5" + 1x3/4"	3x1,5" + 1x3/4"	3x1,5" + 1x3/4"	3x1,5" + 1x3/4"	3x1,5" + 1x1"
Steam inlet	inch	1"	1"	1"	1"	1"
Compressed air inlet	mm	Ø 10	Ø 10	Ø 10	Ø 10	Ø 10
Drain	mm	Ø 126	Ø 126	Ø 126	Ø 126	Ø 126
DIMENSIONS H×W×D						
Net weight	kg	1830x2025x1605	1830x2275x1605	1880x2325x1605	2100x2425x1805	2195x2585x1905
TRANSPORT DATA						
Volume (packed)	m ³	7,3	8,1	8,7	10,8	12,3
Packed H×W×D	mm	1985x2100x1740	1985x2355x1740	2080x2400x1740	2250x2485x1940	2265x2665x2040
Gross weight	kg	2760	2970	3150	3760	5310

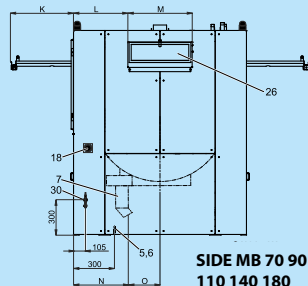
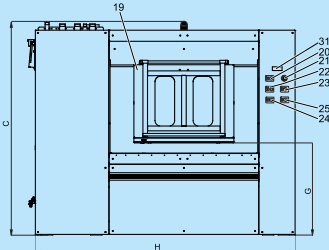
FRONT MB 70 90 110 140 180



TOP MB 70 90 110 140 180



BACK MB 70 90 110 140 180



SIDE MB 70 90 110 140 180

1. Hard cold water inlet
2. Soft cold water inlet
3. Hot water inlet
4. Steam inlet
5. Supply of pressure air
6. Power supply
7. Main drainage valve
8. Recycling drainage valve
9. Venting of the machine
10. Door of loading (dirty side)
11. Programmer
12. Change-over switch
13. Signal of machine running (+ operating air pressure)
14. Central stop
15. Button of door unlocking
16. Button of drum positioning
17. Button of door locking
18. Main switch
19. Door of unloading (clean side)
20. Signal of loading
21. Central stop
22. Button of door locking
23. Button of activation of loading side
24. Button of door unlocking
25. Button of drum positioning
26. Soap hoppers
27. Soft cold water inlet into soap hoppers

WATCH
HYGIENE VIDEO
www.bit.ly/primushygiene



The company preserves the right to change the machines and the specification in this leaflet at any time, without prior notice. Details and photographs are only for information and never binding.

www.primuslaundry.com

Primus by Alliance Laundry Systems



12-2017